

# Health Infrastructure Developments

## Health Scrutiny Committee, 12 January 2022

### What makes the NHS an anchor institution?

NHS organisations are rooted in their communities. Through its size and scale, the NHS can positively contribute to local areas in many ways beyond providing health care. The NHS can make a difference to local people by:



#### **Purchasing more locally and for social benefit**

In England alone, the NHS spends £27bn every year on goods and services.



#### **Using buildings and spaces to support communities**

The NHS occupies 8,253 sites across England on 6,500 hectares of land.



#### **Working more closely with local partners**

The NHS can learn from others, spread good ideas and model civic responsibility.



#### **Reducing its environmental impact**

The NHS is responsible for 40% of the public sector's carbon footprint.

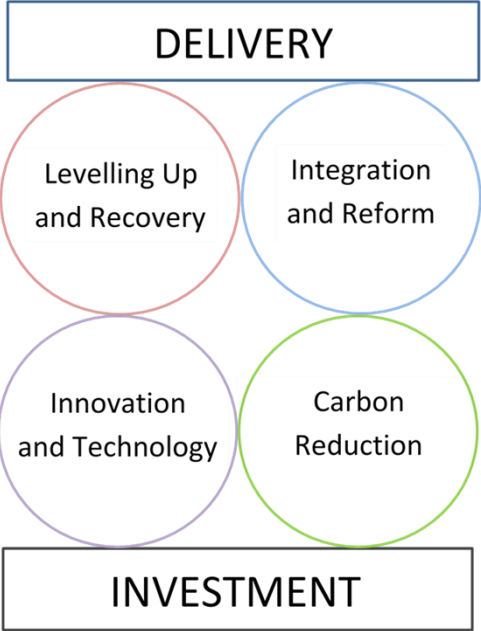
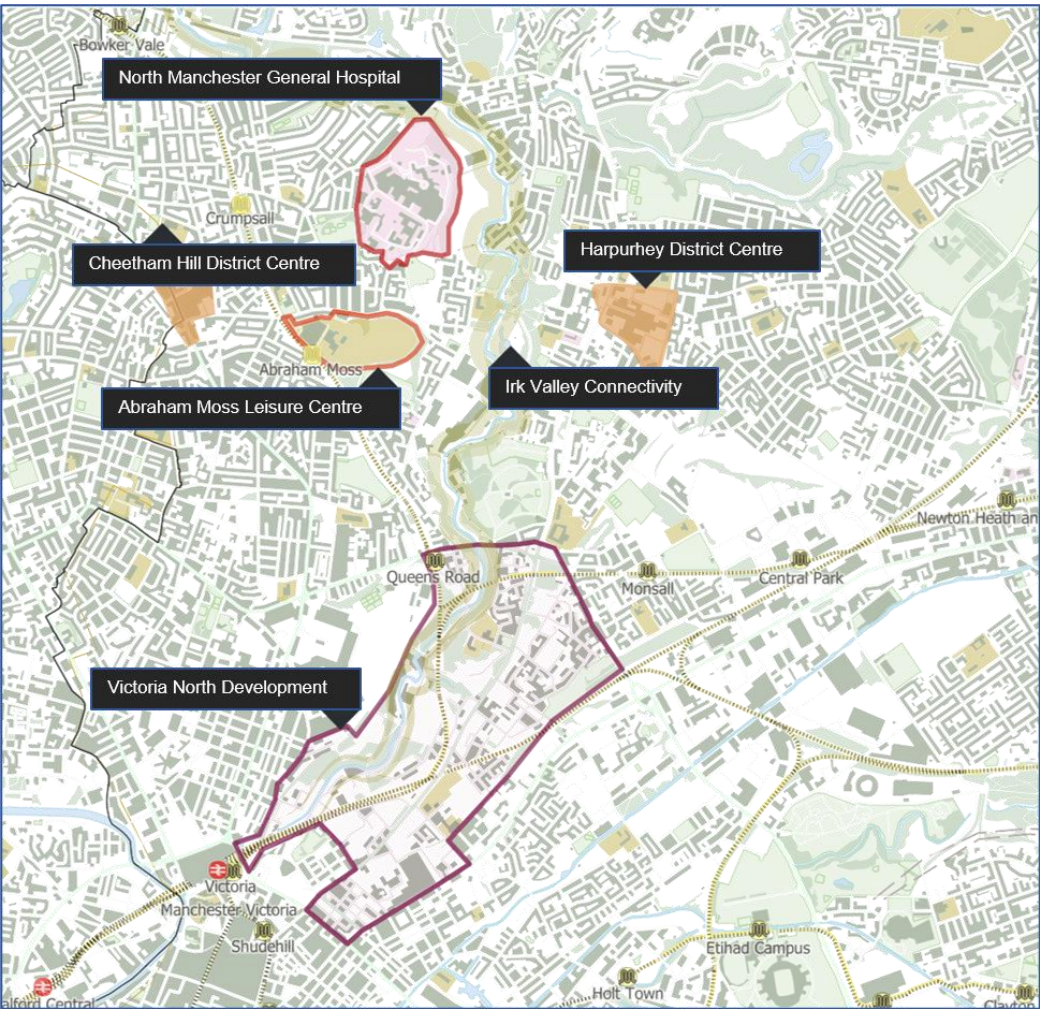


#### **Widening access to quality work**

The NHS is the UK's biggest employer, with 1.6 million staff.

As an anchor institution, the NHS influences the health and wellbeing of communities simply by being there. But by choosing to invest in and work with others locally and responsibly, the NHS can have an even greater impact on the wider factors that make us healthy.

# The North Manchester Strategy



# North Manchester Investments

## Major Investments in North Manchester

Project	2021	2022	2023	2024	2025	2026	2027	2028	2029	2030	2031	2032	2033	2034	2035
Victoria North	Strategic redevelopment and construction														
New Park House		Construction													
NMGH Redevelopment	Enabling				Construction*										

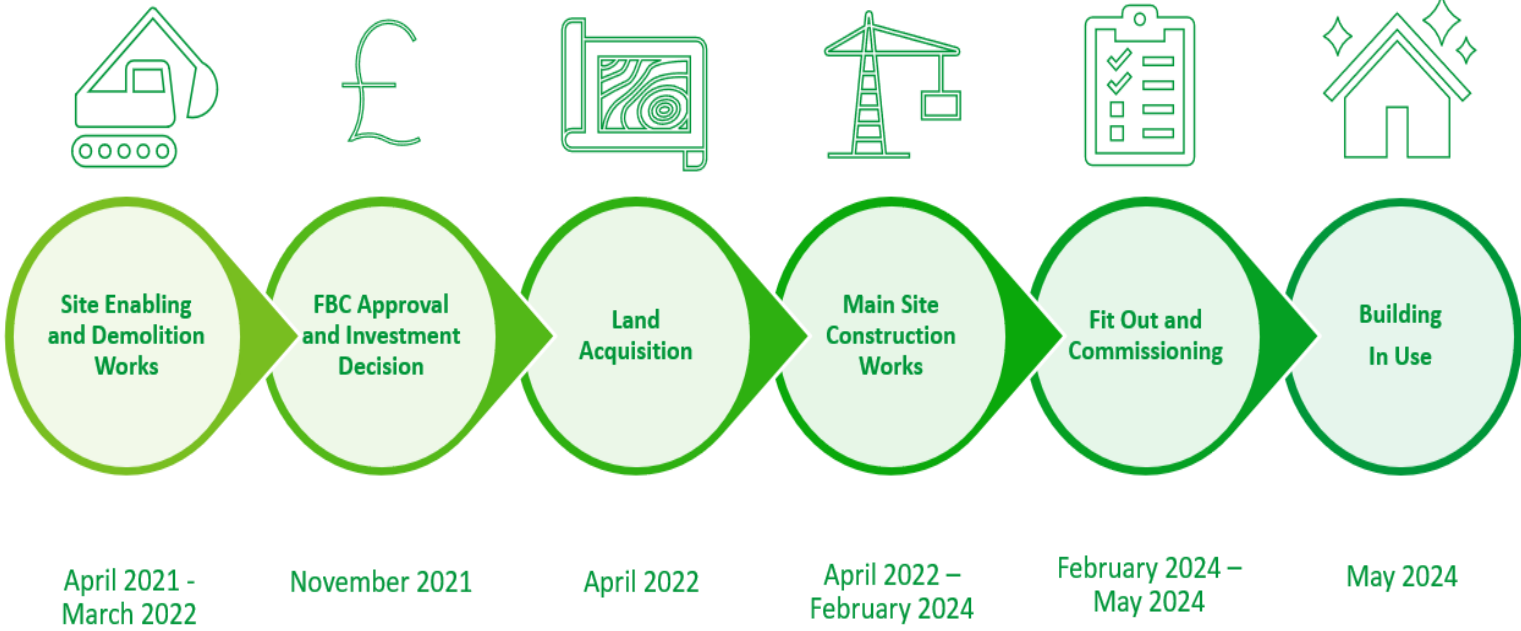
\* Subject to business case approval



# Update on the New Park House Development (NPHD)

Improving Mental Health  
in North Manchester

# Delivery Programme



Improving Mental Health  
in North Manchester



**En-Suite Bedrooms**



**Therapeutic Outdoor Spaces**



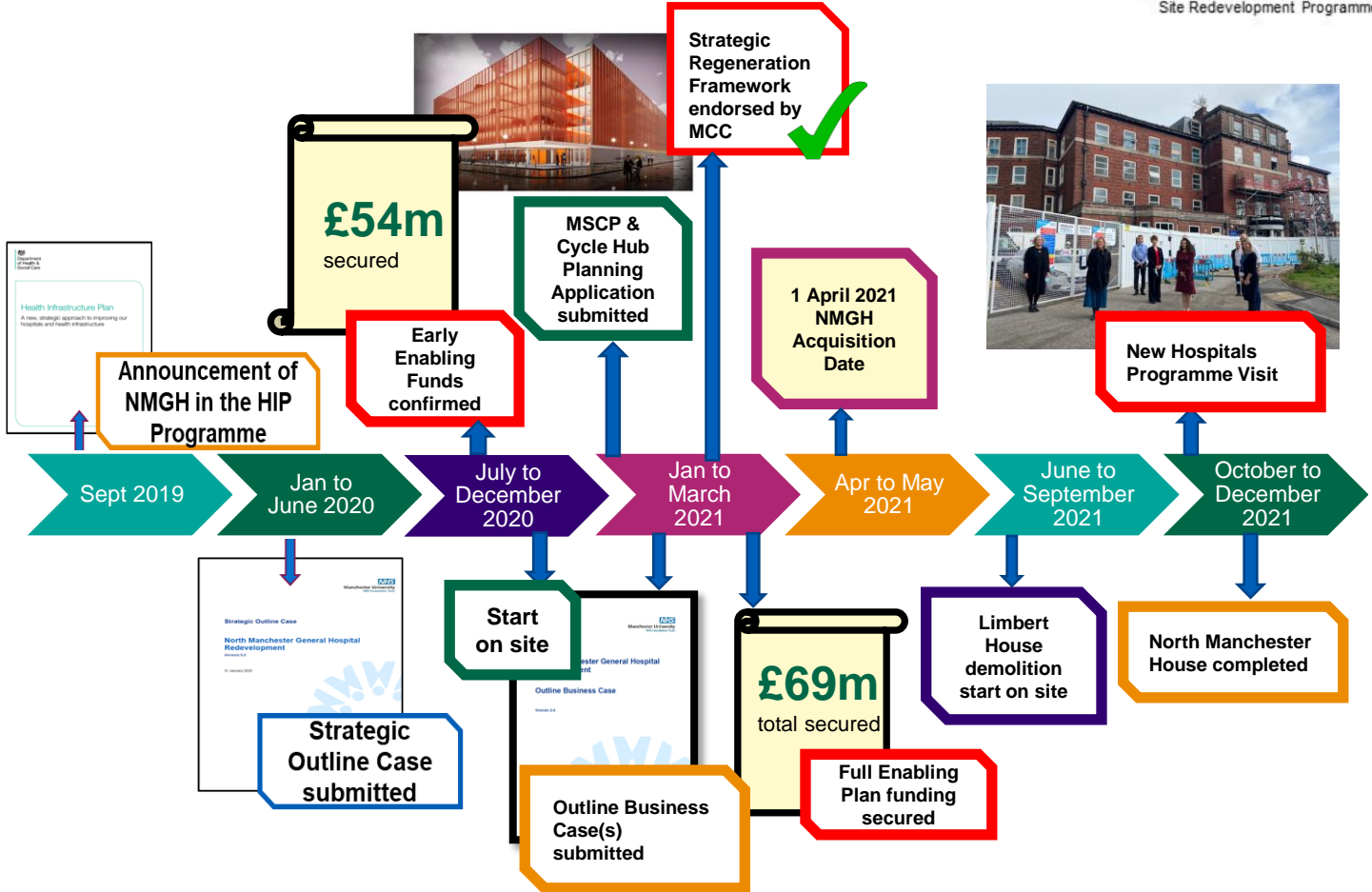
**Modern and Sustainable Design**



**Communal and Activity Spaces**



# NMGH Redevelopment Timeline



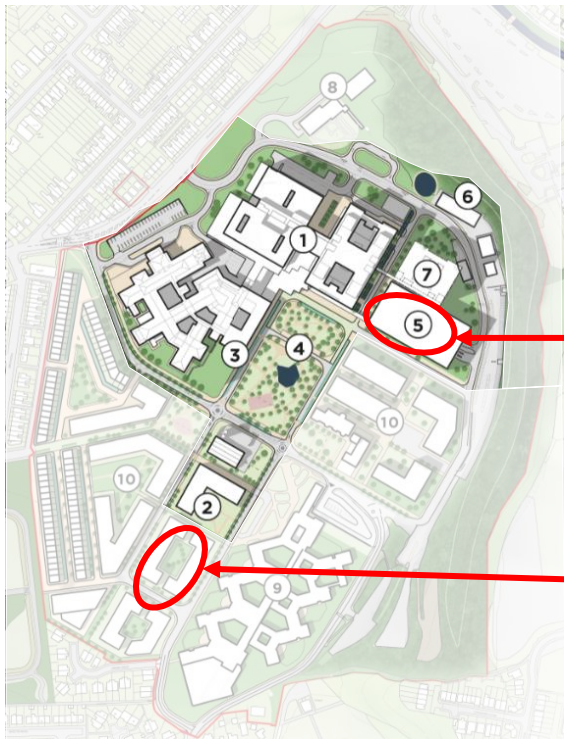






# Multi Storey Car Park with Cycle Hub and North Manchester House offices

£69.7m approved to date from the New Hospitals Programme for the Enabling Plan: Demolitions, Multi Storey Car Park with Cycle Hub and North Manchester House Modular Accommodation on site



c1,000 space  
MSCP with EV  
Charging and  
Cycle Hub  
On site in 2022



Modular office  
accommodation  
providing 300  
desks.  
Completed  
November 2021

# Wythenshawe Masterplan



# Wythenshawe Masterplan: Objectives



- CQC ‘Good’ Rating with ‘Outstanding’ for Caring
  - Key strengths in Cardiac and Respiratory work
  - Site development has been opportunistic over time
  - Inward looking estate with challenging wayfinding
  - Significant surface car parking utilising much of the estate
- 
- **Retention** of the existing hospital services and facilities throughout
  - Create a **modern, efficient and flexible** healthcare estate
  - Opportunity to create a **mixed use development** with a redeveloped hospital at its heart
  - Build on Wythenshawe’s strengths to harness **research opportunities**
  - Utilise the estate to **maximise economic impact** for this part of the City, linking in with neighbouring developments
  - Ensure a **social value strategy** is embedded into the development



# Wythenshawe Masterplan: Vision

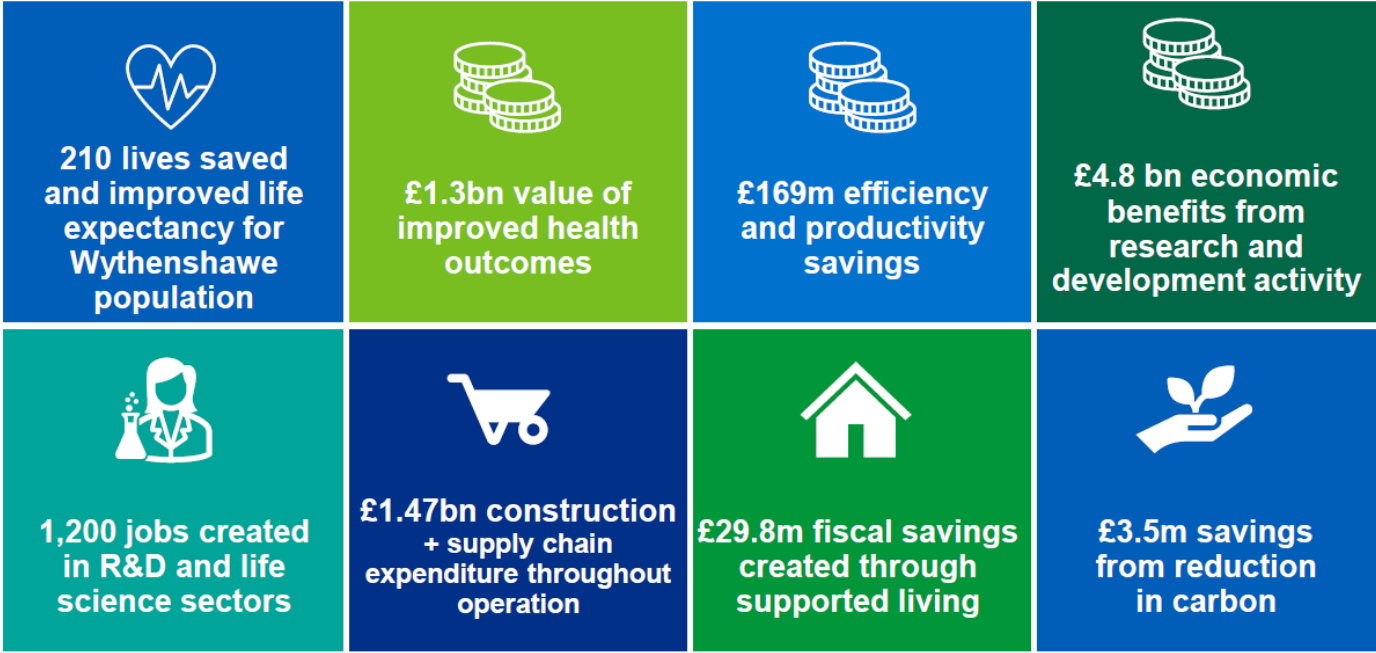


Manchester University  
NHS Foundation Trust





# Wythenshawe Masterplan: Benefits & Next Steps



Assessed over a 30 year period

- ✓ Strategic Regeneration Framework Approved
- ✓ Expression of Interest submitted to the NHP Programme
  - Key Stakeholder Partnership and Innovation Strategy
  - Unlocking Investment